

# MEDICAL OFFICE SUITES FOR LEASE



📍 9631 N. Nevada Street  
Spokane, WA 99218

Offered t  
**\$23 PSF**  
**Full Service**

[ccimteam.com](http://ccimteam.com)

Parcel: 36174.1603

## NORTHPOINT MEDICAL BUILDING

Quality, multi-tenant, professional office/medical building located within North Spokane's Medical Corridor east of the Y. The building offers plenty of parking and a great tenant mix. Building amenities include an elevator, additional restrooms, drinking fountains, sitting area and large basement conference room. Leases are Full Service. Tenants responsible for their suite's janitorial. Monument signage available.

Suite 205 is 1,788 square feet and features a reception area, waiting room, storage shelves, 6 private offices/exam rooms, breakroom/lab and a restroom. Lots of natural light overlooking the north lot.

Suite 202 is 2,746 square feet and features a large open reception area, 5 offices, 7 clinic rooms, a break room and restroom.



**ROB KANNAPIEN**  
208.704.3832  
robk@ccim.net  
**CCIMTEAM.COM**

**CORY EHRGOTT**  
509.499.9968  
coryehrgott@cbsr.com

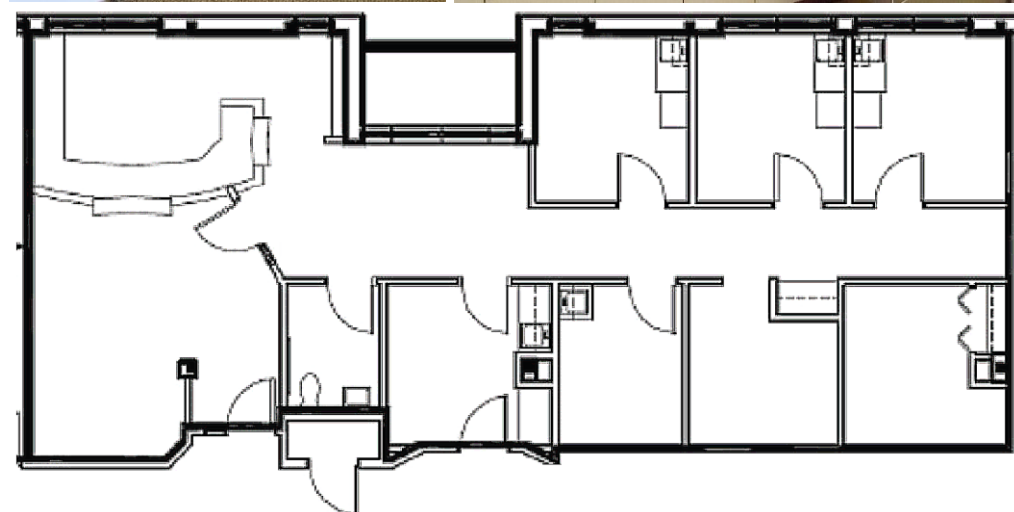
Data is deemed reliable, no warranties or representations expressed or implied. Broker not responsible for changes, errors, omissions, or prior sale without notice. All critical measurements shall be done by Lessee or Buyer.



**COLDWELL BANKER  
COMMERCIAL**  
SCHNEIDMILLER REALTY  
2000 Northwest Blvd  
Coeur d'Alene, ID 83814











**ROB KANNAPIEN**  
**CORY EHROTT**

208.704.3832

509.499.9968

robk@ccim.net

coryehrott@cbsr.com

ccimteam.com



**COLDWELL BANKER**  
**COMMERCIAL**  
SCHNEIDMILLER REALTY





**ROB KANNAPIEN**  
**CORY EHROGOTT**

208.704.3832

509.499.9968

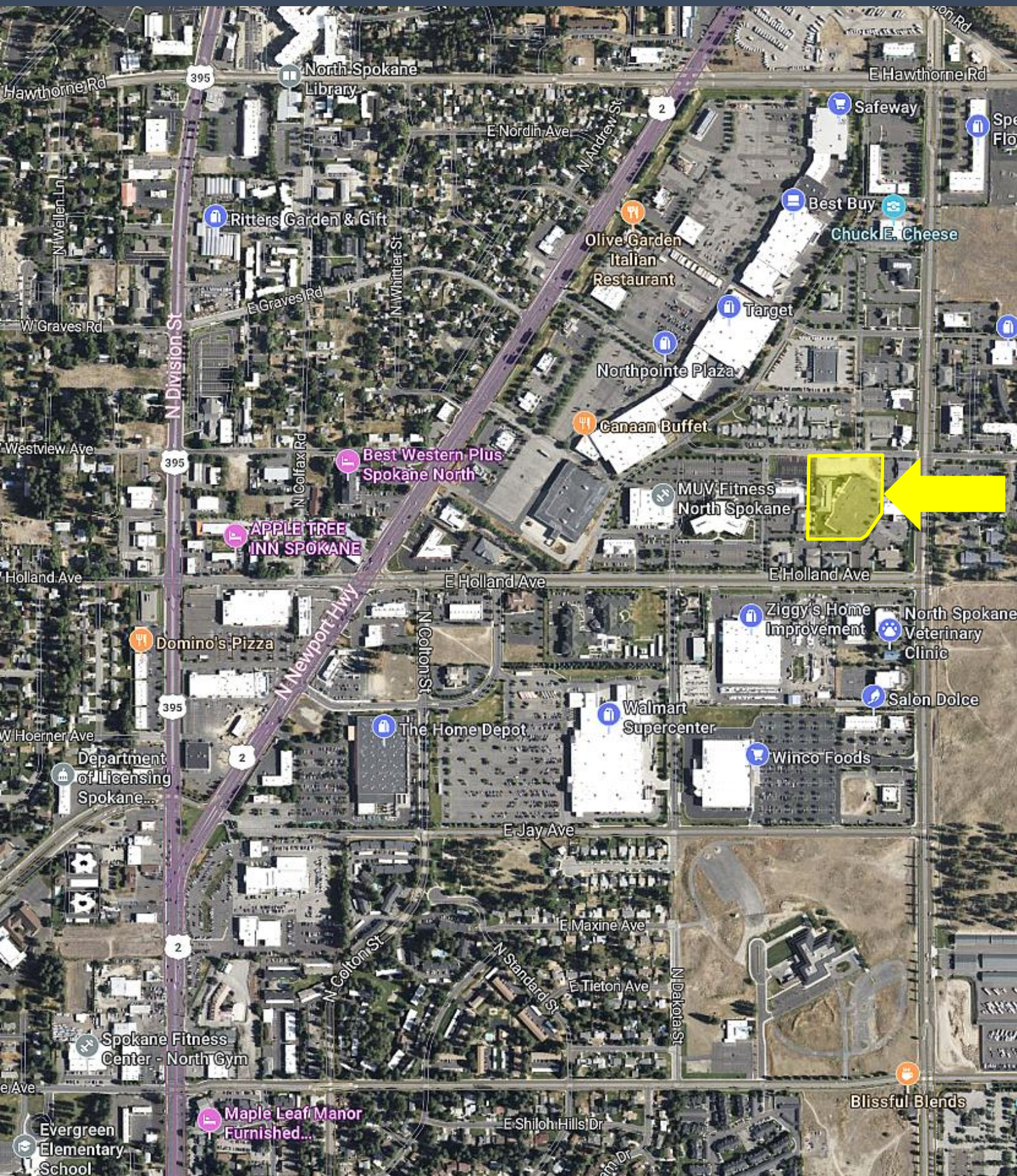
robk@ccim.net ccimteam.com

coryehrgott@cbcsr.com



**COLDWELL BANKER**  
**COMMERCIAL**  
SCHNEIDMILLER REALTY





**ROB KANNAPIEN**  
**CORY EHROTT**

208.704.3832

509.499.9968

robk@ccim.net

coryehrott@cbcsr.com

ccimteam.com



**COLDWELL BANKER**  
**COMMERCIAL**  
SCHNEIDMILLER REALTY