

MEDICAL OFFICE SUITE FOR LEASE

📍 1334 N Whitman Lane
Liberty Lake, WA 99019

Offered t
\$24 PSF
NNN

ccimteam.com

Parcel: 55152.9190

HEALTH & WELLNESS CENTER

Nice multi-tenant, professional office/medical building located in Liberty Lake with excellent visibility from Interstate 90 with traffic counts of 79,000 cars per day. The building offers good parking and a great tenant mix. Building amenities include an elevator, interior reader board and beautiful park like setting including a waterfall.

Suite 100 is 3,743 square feet and features a large open area with high ceilings, built in reception area, additional reception desk, shower room, restroom, maintenance room and 3 private offices. There is a separate rear entrance with double doors. Tons of natural light. Building signage available.

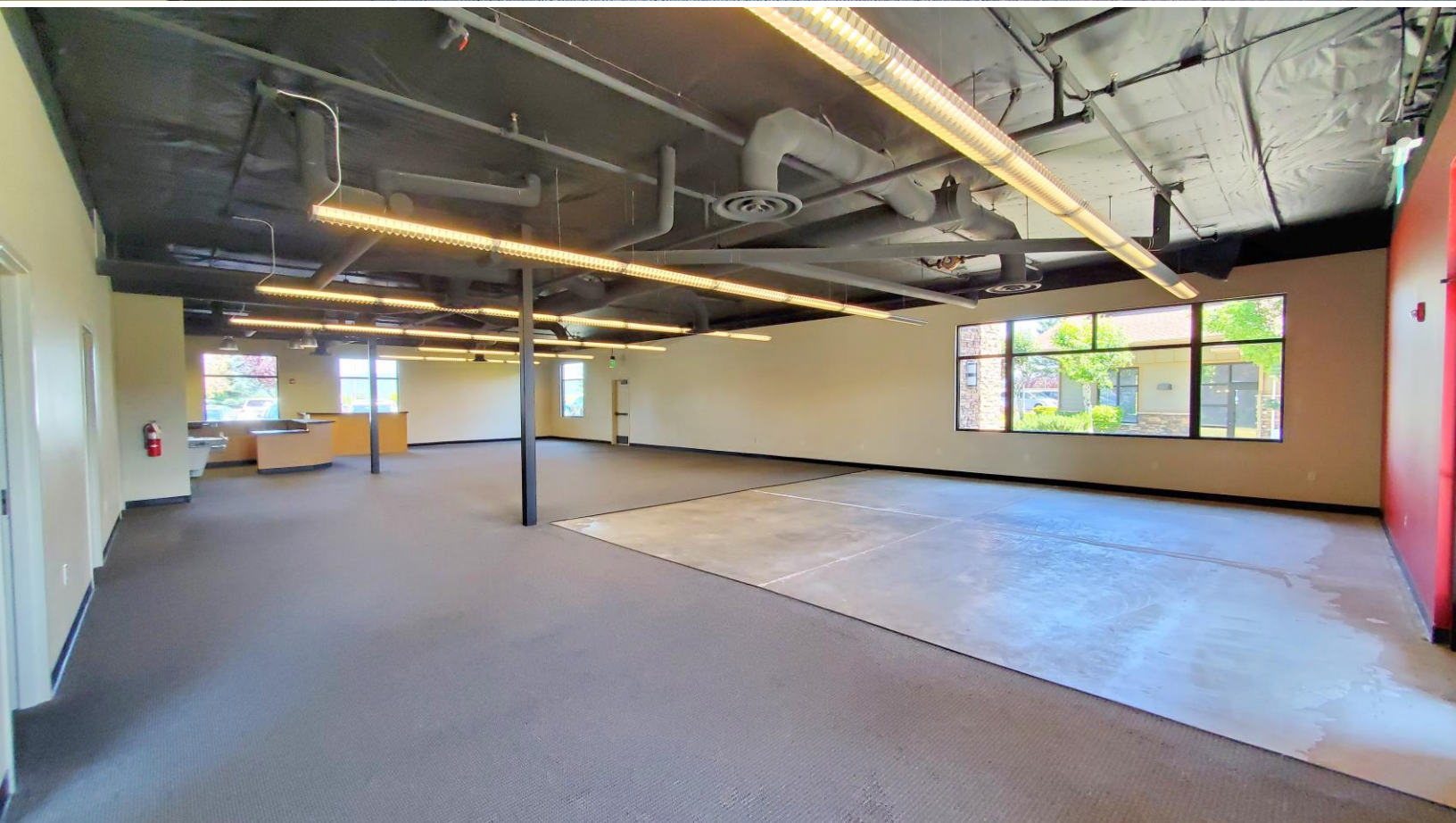
📞 **ROB KANNAPIEN**
208.704.3832
robk@ccim.net
CCIMTEAM.COM

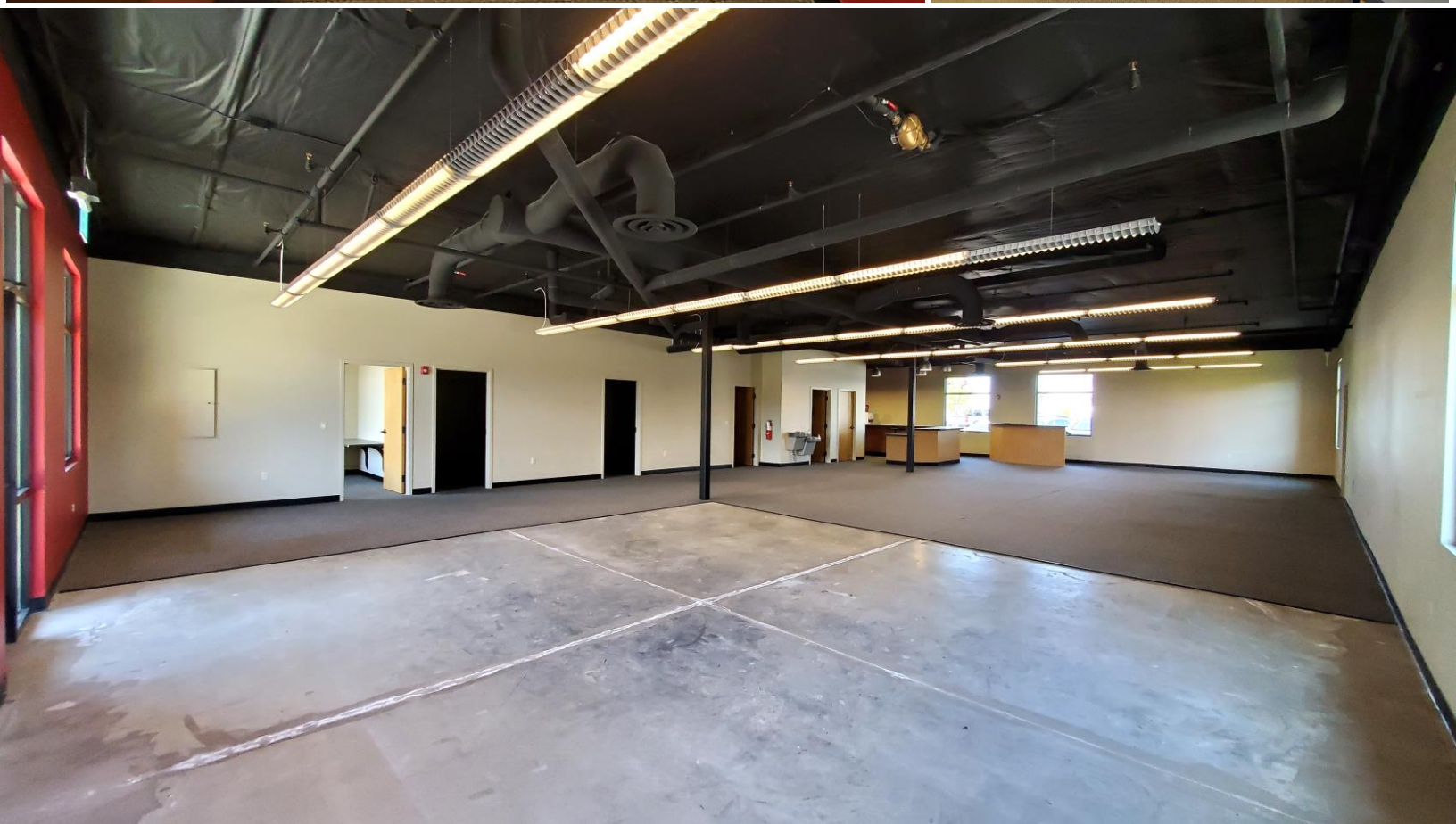
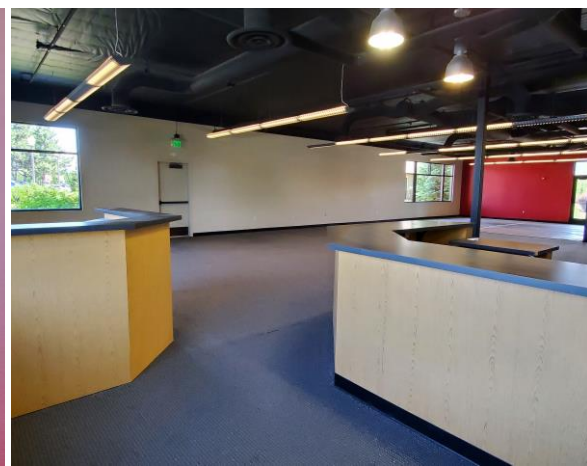
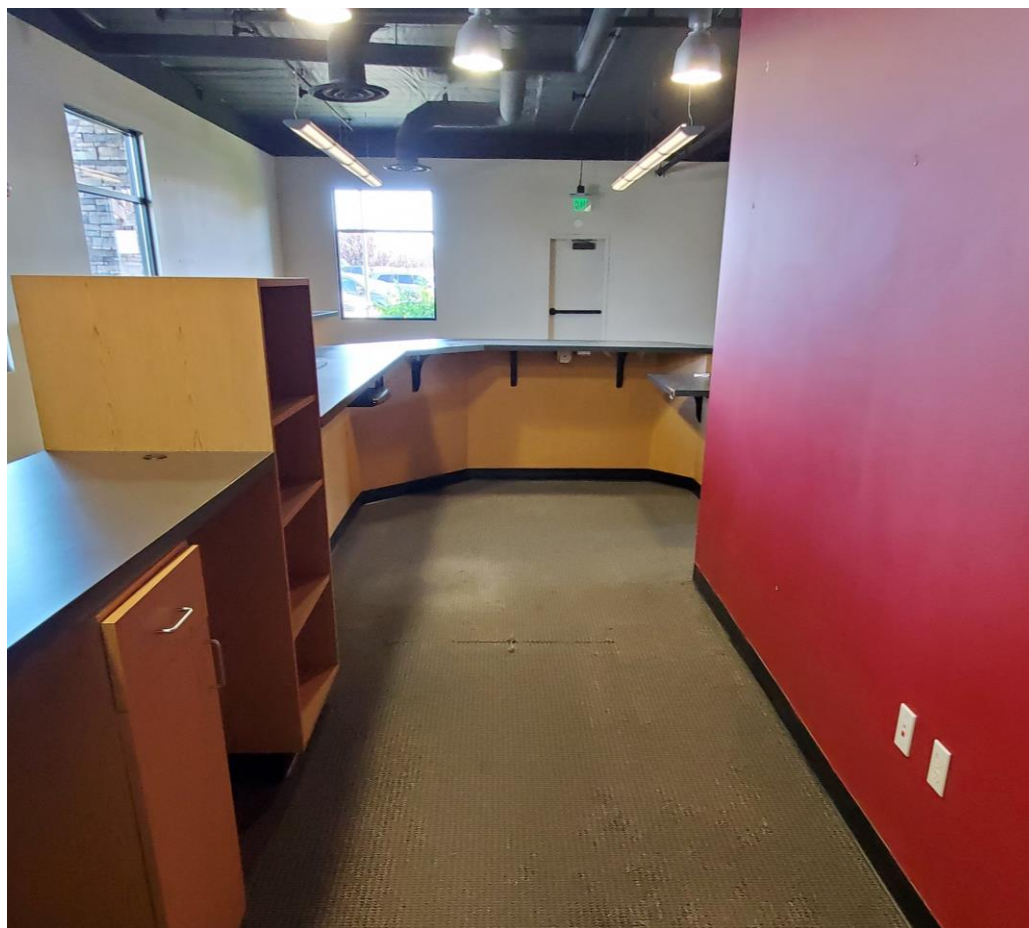
CORY EHRGOTT
509.499.9968
coryehrgott@cbsr.com

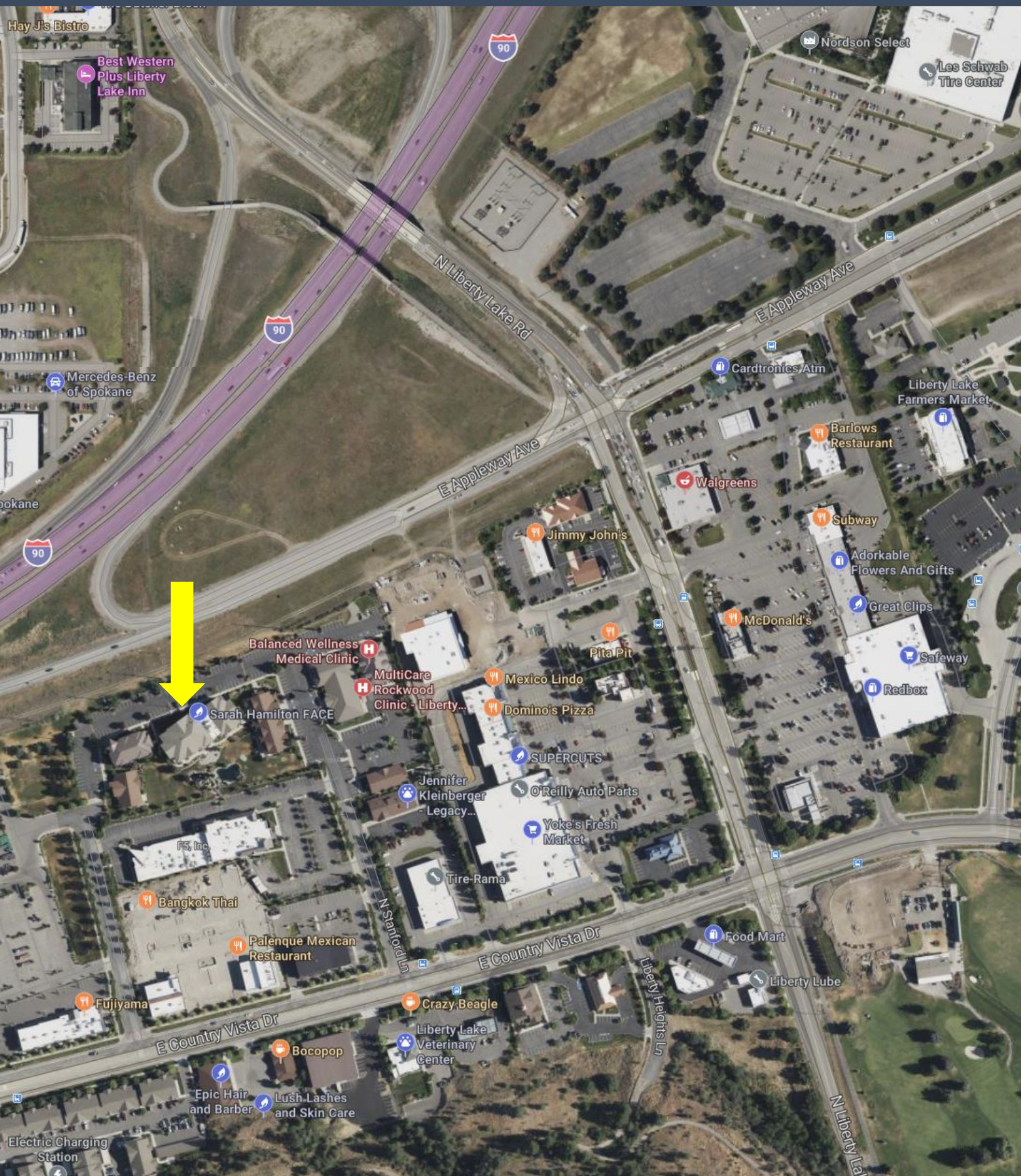
Data is deemed reliable, no warranties or representations expressed or implied. Broker not responsible for changes, errors, omissions, or prior sale without notice. All critical measurements shall be done by Lessee or Buyer.

 **COLDWELL BANKER
COMMERCIAL**
SCHNEIDMILLER REALTY
2000 Northwest Blvd
Coeur d'Alene, ID 83814









ROB KANNAPIEN
CORY EHROTT

208.704.3832

509.499.9968

robk@ccim.net ccimteam.com

coryehrott@cbsr.com



**COLDWELL BANKER
COMMERCIAL**
SCHNEIDMILLER REALTY