

MEDICAL OFFICE SUITE FOR LEASE

📍 1334 N Whitman Lane
Liberty Lake, WA 99019

Offered t
\$22 PSF
NNN

ccimteam.com

Parcel: 55152.9190

HEALTH & WELLNESS CENTER

Nice multi-tenant, professional office/medical building located in Liberty Lake with excellent visibility from Interstate 90 with traffic counts of 79,000 cars per day. The building offers good parking and a great tenant mix. Building amenities include an elevator, interior reader board and beautiful park like setting including a waterfall.

Suite 160 is 3,105 square feet and features a large open area, built in reception area, waiting room, staff storage area, 5 private offices, conference room, breakroom and a restroom. Lots of natural light overlooking waterfall. There is a rear entrance that could be used as the main entrance.

📞 **ROB KANNAPIEN**
208.704.3832
robk@ccim.net
CCIMTEAM.COM

CORY EHRGOTT
509.499.9968
coryehrgott@cbsr.com

Data is deemed reliable, no warranties or representations expressed or implied. Broker not responsible for changes, errors, omissions, or prior sale without notice. All critical measurements shall be done by Lessee or Buyer.

 **COLDWELL BANKER
COMMERCIAL**
SCHNEIDMILLER REALTY
2000 Northwest Blvd
Coeur d'Alene, ID 83814





ROB KANNAPIEN
CORY EHROTT

208.704.3832

509.499.9968

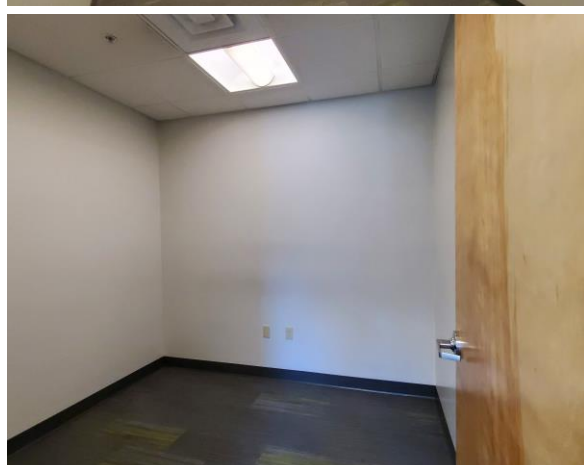
robk@ccim.net

coryehrott@cbsr.com

ccimteam.com



COLDWELL BANKER
COMMERCIAL
SCHNEIDMILLER REALTY



ROB KANNAPIEN
CORY EHROTT

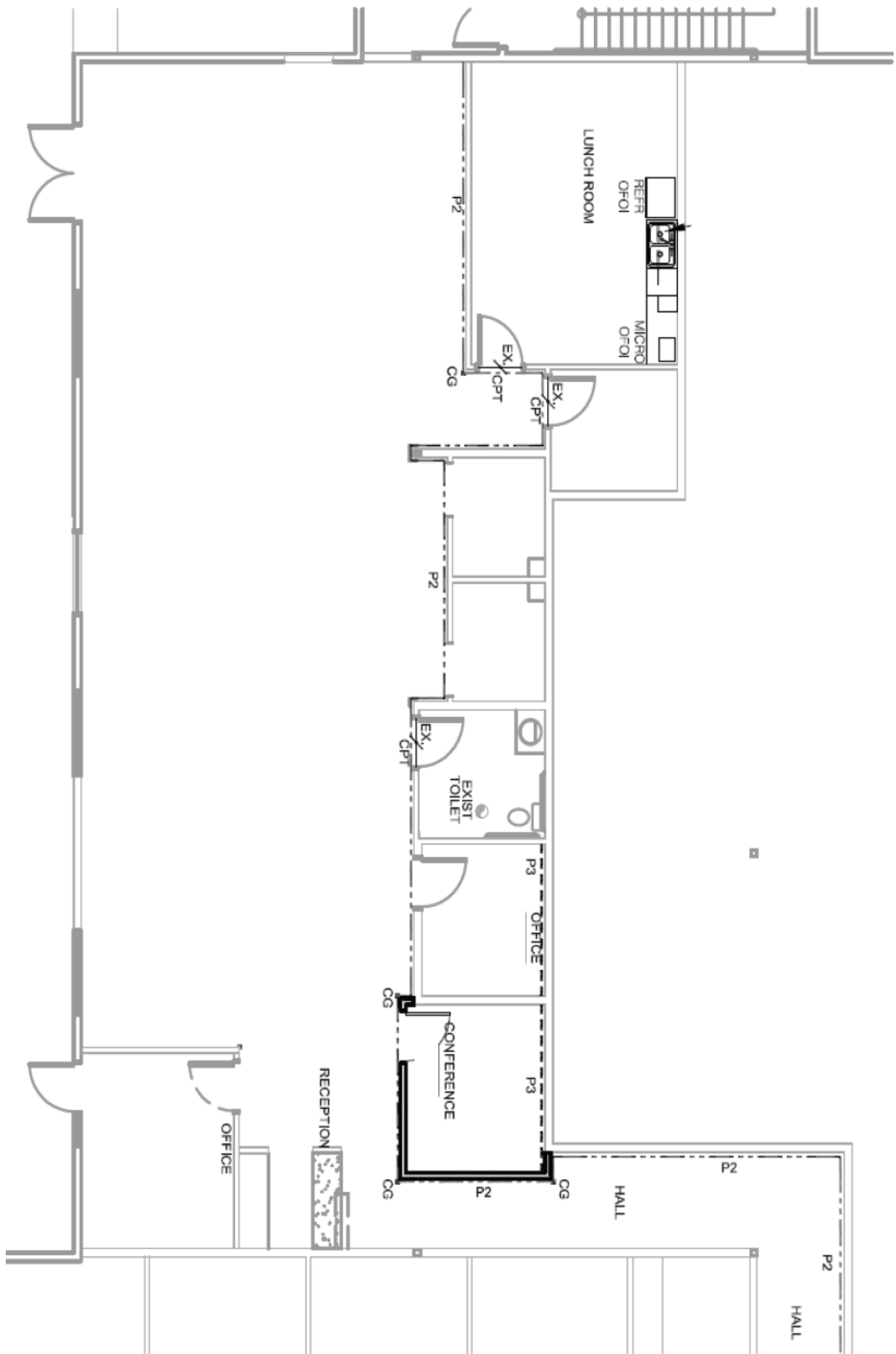
208.704.3832

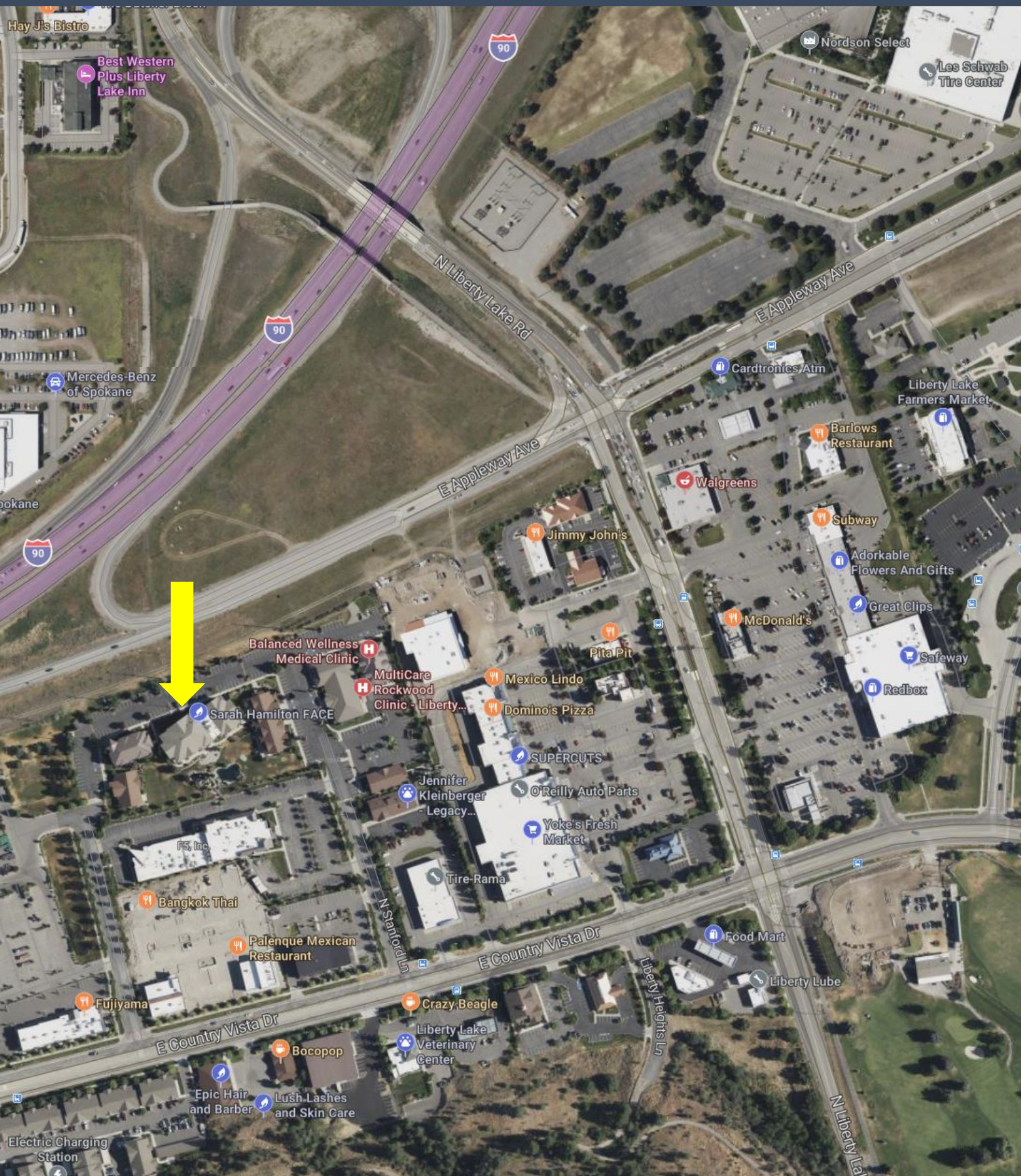
509.499.9968

robk@ccim.net ccimteam.com

coryehrott@cbsr.com







ROB KANNAPIEN
CORY EHROGOTT

208.704.3832

509.499.9968

robk@ccim.net

coryehrogott@cbcsr.com

ccimteam.com



**COLDWELL BANKER
COMMERCIAL**
SCHNEIDMILLER REALTY