

FOR LEASE OFFICE SUITES



📍 1221 W Ironwood
Drive, Coeur d'Alene,
ID 83814

Offered at
\$1.40 PSF
Full Service

Ste 100 Available 7/1/24

Ste 102 Available 8/1/24

Ste 104/105 Ava 9/1/24

ccimteam.com

IRONWOOD NORTH

Quality, multi-tenant, professional office/medical building located within Coeur d'Alene's Ironwood Medical Corridor, between Northwest Blvd and Highway 95, Riverstone Village, and the Kootenai Health Campus. The building offers plenty of parking and a good tenant mix. Leases are full service except for tenants interior janitorial.

Suite 104 is 2,400 sf and Suite 105 is 1,615 sf.

These suites can be combined for a total of 4,015 sf.

Suite 100 is 2,688 sf and Suite 102 is 2,382 sf.

These suites can be combined for a total of 5,070 sf.

Or, all suites can be combined for a total of 9,085 sf.

📞 **ROB KANNAPIEN**
208.704.3832
robk@ccim.net
CCIMTEAM.COM

CORY EHRGOTT
509.499.9968
coryehrgott@cbsr.com

Data is deemed reliable, no warranties or representations expressed or implied. Broker not responsible for changes, errors, omissions, or prior sale without notice. All critical measurements shall be done by Lessee or Buyer.

 **COLDWELL BANKER**
SCHNEIDMILLER REALTY
2000 Northwest Blvd
Coeur d'Alene, ID 83814

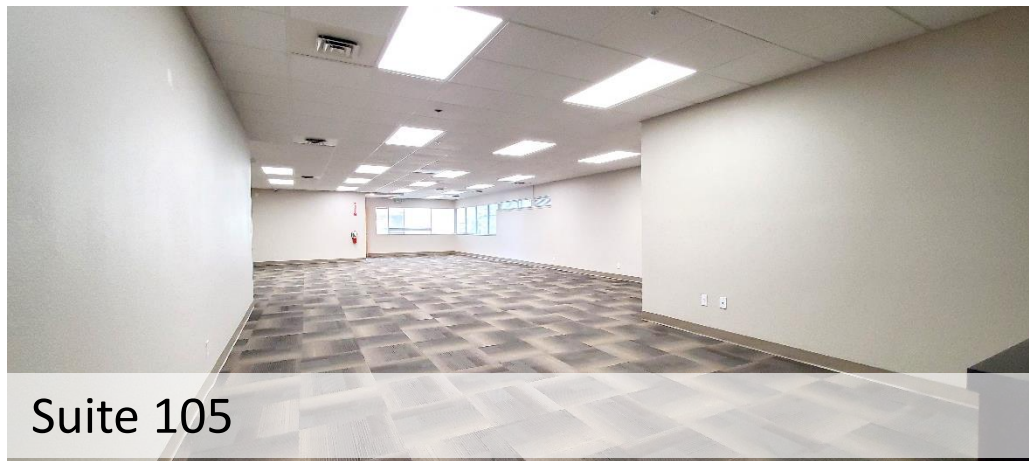




Suite 105



Suite 105



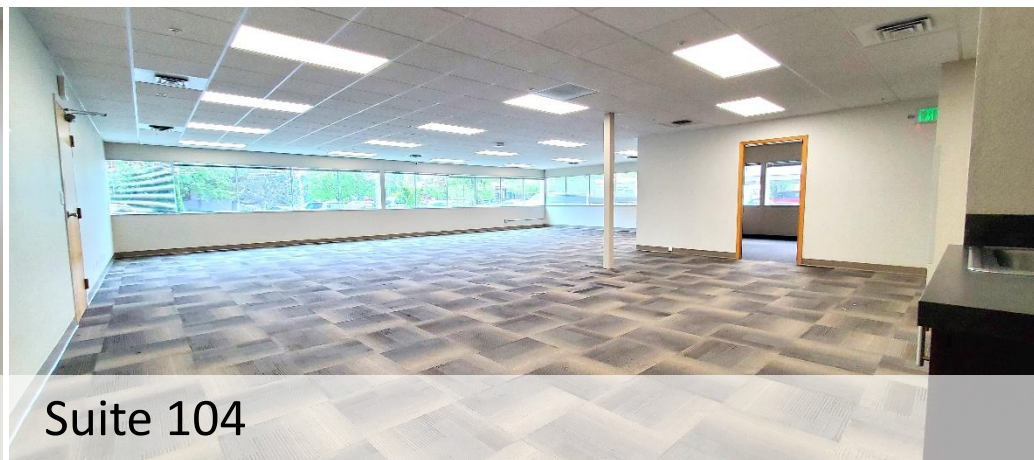
Suite 105



Suite 105



Suite 104



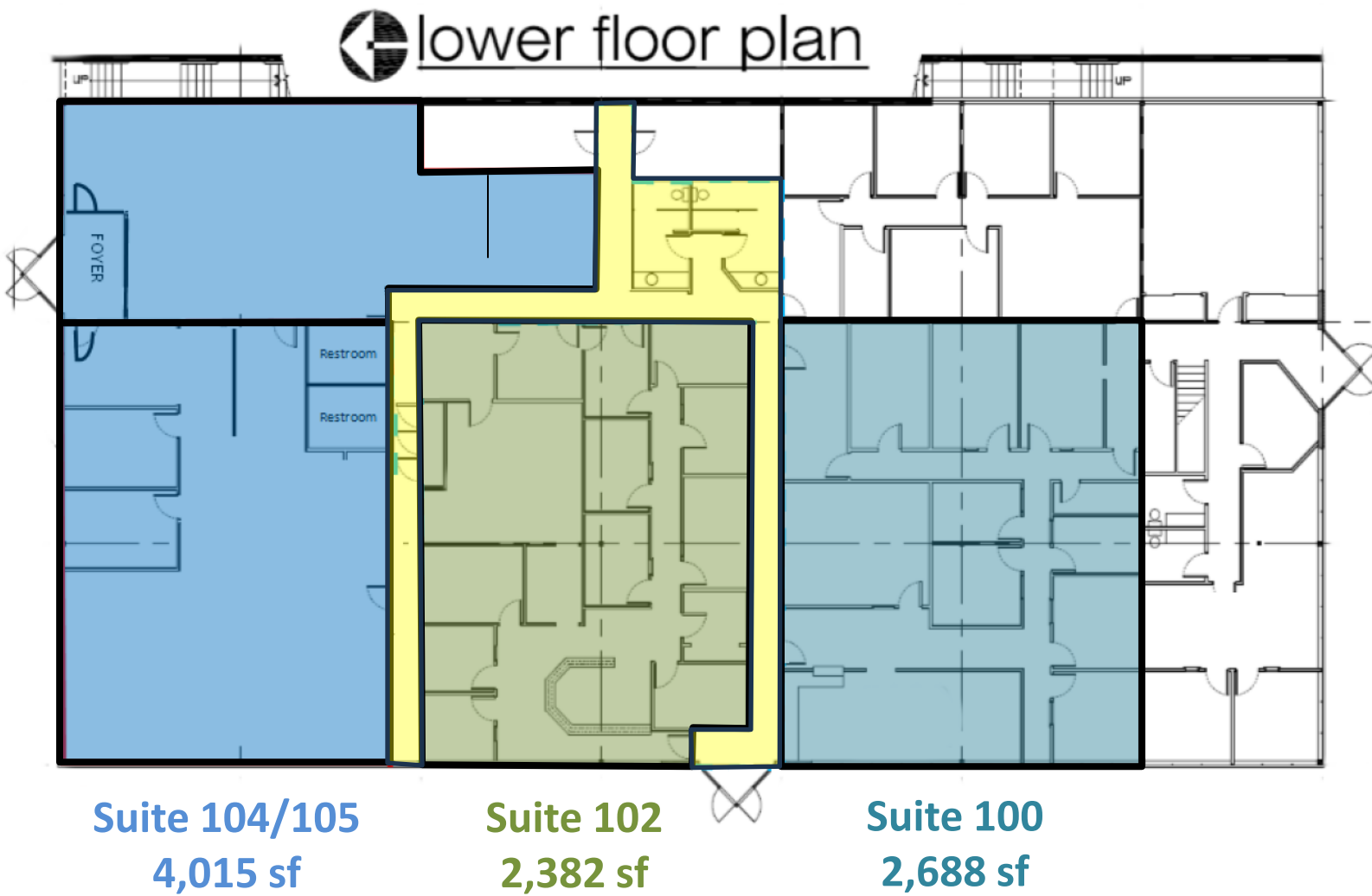
Suite 104



Suite 104



Suite 104



Shared Common Area and Restrooms



ROB KANNAPIEN
CORY EHROGOTT

208.704.3832

509.499.9968

robk@ccim.net ccimteam.com

coryehrogott@cbcsr.com

