


# FOR LEASE OFFICE SUITES



 1221 W Ironwood Drive, Coeur d'Alene, ID 83814

Offered at  
**\$1.40 PSF**  
Full Service

Ste 100 Available 7/1/24

Ste 102 Available 8/1/24

Ste 104/105 Ava 9/1/24

[ccimteam.com](http://ccimteam.com)

## IRONWOOD NORTH

Quality, multi-tenant, professional office/medical building located within Coeur d'Alene's Ironwood Medical Corridor, between Northwest Blvd and Highway 95, Riverstone Village, and the Kootenai Health Campus. The building offers plenty of parking and a good tenant mix. Leases are Modified Gross, Tenant is responsible for base rent plus gas, electricity, phone, data, interior janitorial.

Suite 104 is 2,400 sf and Suite 105 is 1,615 sf.

These suites can be combined for a total of 4,015 sf.

Suite 100 is 2,688 sf and Suite 102 is 2,382 sf.

These suites can be combined for a total of 5,070 sf.

Or, all suites can be combined for a total of 9,085 sf.

 **ROB KANNAPIEN**  
208.704.3832  
robk@ccim.net

**CORY EHRGOTT**  
509.499.9968  
cory@kwiproperties.com



**CCIMTEAM.COM**

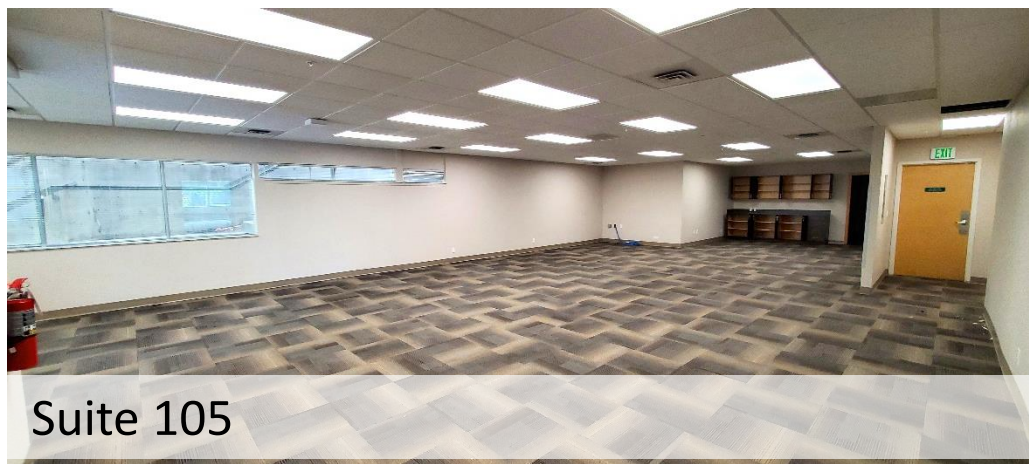


**COLDWELL BANKER  
COMMERCIAL**  
SCHNEIDMILLER REALTY

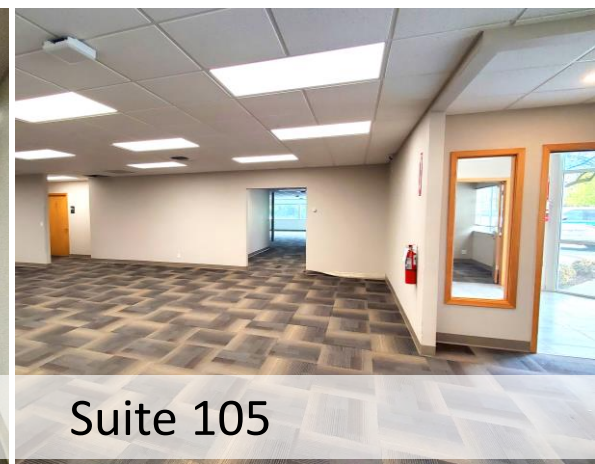
2000 Northwest Blvd  
Coeur d'Alene, ID 83814



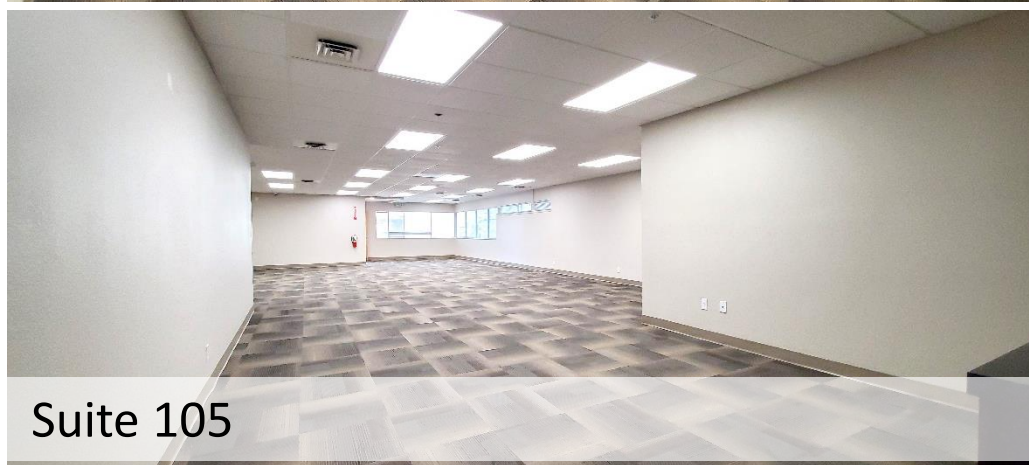




Suite 105



Suite 105



Suite 105



Suite 105



Suite 104



Suite 104

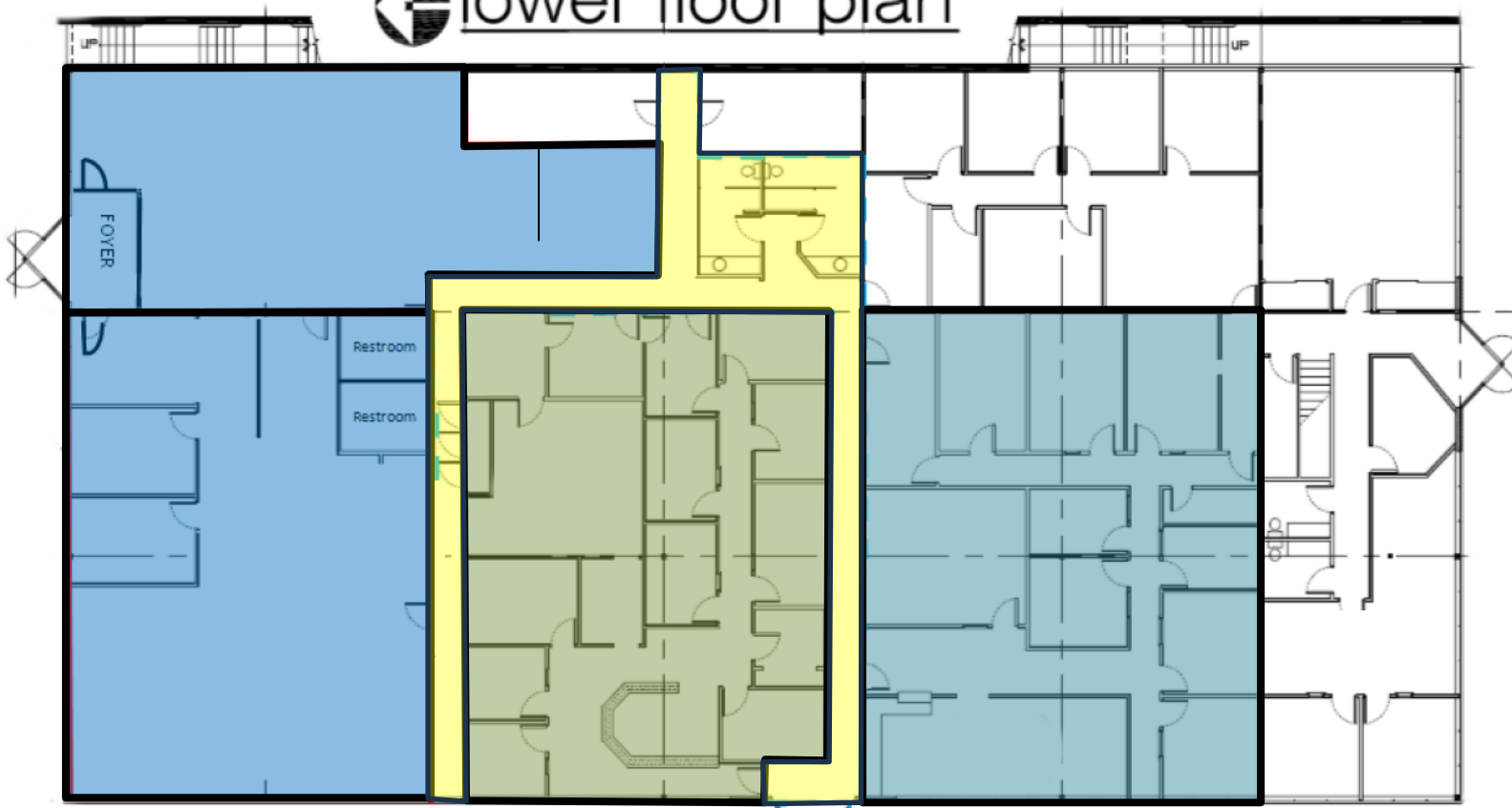


Suite 104



Suite 104

← lower floor plan



**Suite 104/105**  
4,015 sf

**Suite 102**  
2,382 sf

**Suite 100**  
2,688 sf

**Shared Common Area and Restrooms**





**ROB KANNAPIEN**  
**CORY EHRGOTT**

208.704.3832 robk@ccim.net

509.499.9968 cory@kwiproperties.com

**CCIMTEAM.COM**



**COLDWELL BANKER**  
SCHNEIDMILLER REALTY